

BACS BULLETIN November 2022

HWY 28 RR 240, Bon Accord, AB T0A 0K0
www.bonaccordschool.ca T: (780) 921-3559

IMPORTANT DATES

Nov 1 and 4:
Pre-K Case Conferences, no
classes

November 3:
Edo of Japan (KT)

Nov 7-9:
Fall Break - No Classes

Nov 10:
Day in Lieu for Parent Teacher
interviews - No Classes

Nov 11:
Remembrance Day - No Classes

Nov 13-19:
Métis Week

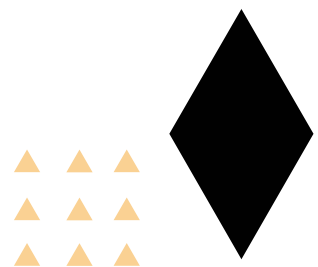
November 14-18:
Scholastic Book Fair

November 16:
Hot lunch-Taco in a Bag (KM)

November 16 and 17:
Parent Teacher Interviews

November 24:
Hot Lunch-McDonalds (KT)

November 30:
Hot Lunch-Pizza Hut (KM)





from the principal

"Ms. Brenneis! I HAVE to tell you! Today our class made 50 rhyming pairs in our Words Their Way work!"

- Logan, Grade 2 student

Dear Bon Accord Community School Families,

It is such an honor and a privilege to witness your children learning each and every day. The excitement and pride that they take in their learning and accomplishments is inspirational and energizing. My best days are when I get to spend time in classrooms or be out on supervision, sharing in the joy that our BACS students bring with them.

Staff have worked hard the last two months getting to know your children and planning lessons and activities that are engaging and meaningful. Please take the time, starting November 14th, before Parent Teacher interviews, to look at Parent Portal and read the comments that teachers have provided for students. They spend countless hours ensuring that each student has comments that are individualized, meaningful and reflective of the learning that is happening in each subject area.

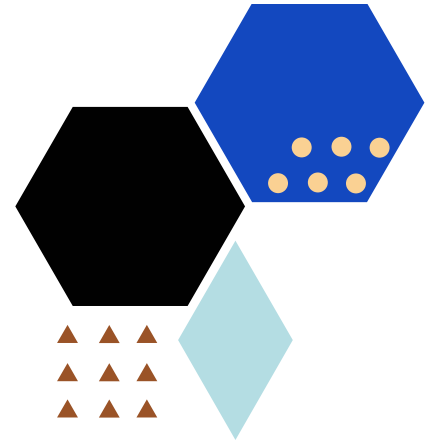
Thank you for your patience and understanding as we navigated being on Outbreak Status the last couple weeks. We appreciate your diligence in keeping students home when they are sick, even though I know it extremely inconvenient and difficult to rearrange schedules and child care. We sure missed being able to have community breakfast, our Halloween parade, and having family, community members and guests join us for our Remembrance Day ceremony. We are hopeful that the break will provide the necessary reset for our students and staff to recover and stay healthy.

We are so lucky to be a part of this generous community. Our PSS has been working tirelessly to provide hot lunch for our students every week, organize the Craft Fair this coming Sunday, as well as the coordinate the Holiday Fundraiser. We are beyond grateful for their involvement and volunteering. This month we also received two donations; one from the Bon Accord and District Agricultural Society in the amount of \$2000 for our Breakfast Program; the second we received from Pickford in the amount of \$1000 for our Grade 4 Recreation Academy. There are not enough words to express how grateful we are for these donations and for our PSS to help run programs and extra-curricular activities without an added cost to families.

Thank you for your continued support and involvement in our school and your child's education.

Ms. Brenneis

October Highlights

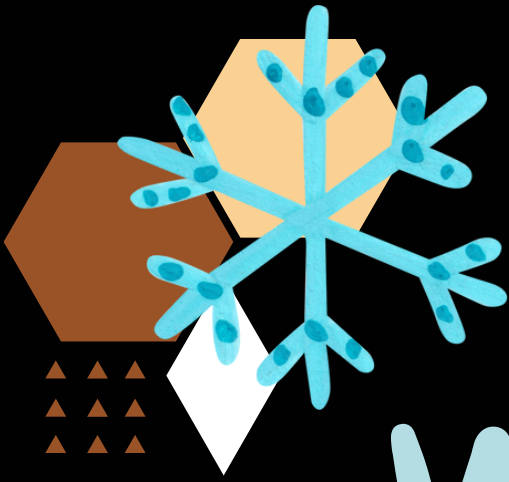


Halloween!



Grade 4 Rec Academy!





Winter Reminder

Please ensure your children have proper winter gear to play outside during the day.

As per Admin Policy and Procedure 255: "The lowest temperature at which students will be required to go outside shall be -25 Degrees Celsius including wind chill and as determined by the Weather Network".



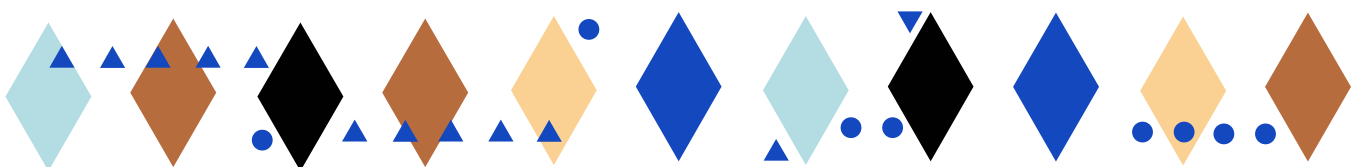


Donated \$2000 and sponsored
our Nutrition Program!



Donated \$1000 and sponsored
Grade 4 Rec Academy Field Trips!

**Huge thank you to our Donors
and Sponsors this month!**





Wanting to Volunteer? Get Involved!

- Help out Mrs. Mercer with Breakfasts
- Join a committee on our Program Support Society
- Volunteer to help with Hot Lunches
- Volunteer in Classrooms (criminal record check required)

Contact our front office for more information!



BACS NUTRITION PROGRAM

Did you Know....

Every student in our school is able to access our breakfast program every morning - which is 240 students!

Each breakfast includes at least 3 different food groups.

Looking to help out?

If you would like to volunteer and help with breakfast preparation or clean up, please email lynnette.mercer@sturgeon.ab.ca

Want to make a food donation?

We are always in need of:

Granola bars

Fresh fruit

Juice boxes

Eggs

Individual Yogurt

Or you could sponsor a special breakfast!



Iyikopiwipisim

Frost Moon Pronounced: ee-oh-gee-pee-wee-pee-sim

Welcome to November

We have been so lucky to have had such a long warm autumn season. As we welcome this new moon we will notice our weather begin to shift. Temperatures are dropping to below 0° overnight and we notice frost on the trees and grass in the mornings. This is our signal that colder weather is almost here to stay, and snow is just around the corner.

What is Frost?

Frost is water vapor that freezes and becomes a thin layer of ice.

Frosty Fun Facts

Did you know that there are several different types of frost?

The three most common are:

Hoar Frost → When the frost grows overnight into long crystals of ice on the ground or other objects outside. It can also grow in freezers.

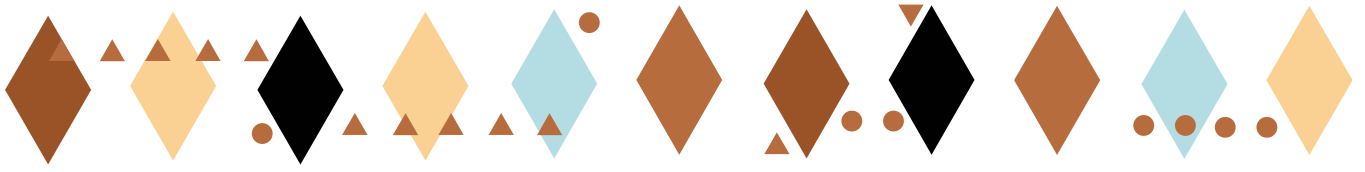
Advection Frost → A collection of small ice spikes that are formed when cold wind blows over tree branches or flag poles.

Window Frost → Forms when a window is exposed to cold air outside, and warm moist air inside. We can find this on windows, and windshields.

Nature Challenge

Bundle up and get outside to enjoy the beautiful frosty mornings. Take your camera and try to find the three different types of frost.





Community Supports



<https://www.bonaccord.ca/>



Bon Accord Gibbons Food Bank

The mission of the Bon Accord Gibbons Food Bank is to provide help to individuals and families in crisis by providing clients with quality, nutritious food. If you or someone you know requires assistance, please contact us at 780-923-2344. Messages are checked daily and all inquiries are answered within 24 hrs.

Did you know that Sturgeon Public School Division also has access to Social Workers?

They can help connect families to various community supports, mental health supports, navigating new systems, and many other areas.

Contact the school for more information.